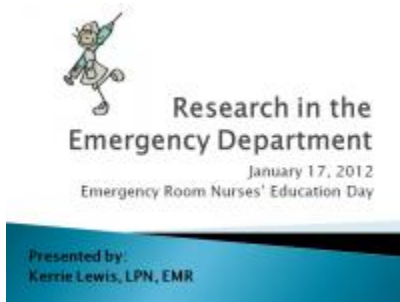


RCH Nursing Education Day

Published on Jan 25, 2012

Lunch & Learn (January 17, 2012)

Feature presentation highlighting research in the Emergency Department



Speaker: Kerrie Lewis

Title: Research in the Emergency Department: Emergency Room Nurses' Education Day

Research in the Emergency Department at RCH

A special thanks to the **Injured Driver's study** for providing our Lunch & Learn today. Pizza and pop from the Flying Wedge pizza shop was brought in and it was fantastic. Today's topic highlighted the research we are doing in the Emergency Department.

The presentation lasted just under an hour and covered topics such as:

- Why support research
 - win small prizes
 - studies lead to change in practice to improve our care
 - lots of interesting cases are seen in the ED
 - research can be fun
- What hinders research
 - hospital business
 - clinical layout (example: the Digital Photo IV Therapy study had a camera in the IV Therapy room making it difficult for pictures to be taken for patients seen in other parts of the emergency department. A solution was implemented where patients will get their 1st photo taken within 24 hours when they returned for their next IV treatment)
 - difficult study design
- Who can start a research project
 - anyone who is a healthcare provider interested in improving our practice
- Who will help me if I want to start a research project
- What kind of studies designs are there
- How to get started

Featured Research Projects:

Completed Studies


- Digital Photo IV Therapy
 - interest was expressed in having digital photos as part of the charting
- Suture Self-Removal
 - questions came up about what will happen now, will patients be asked to remove their own sutures as part of normal treatment


Current Projects:


- Injured Driver's Study (Feature presentation)
- First Year Attending Syndrome
- ECG at Triage
- Ultrasound Fellowship
- Mass Gathering Medicine

A full PDF version of the PowerPoint presentation can be found in 3 parts by clicking the links below.

If you are interested in beginning a research project email kerrie.lewis@rchemerg.com

 [ER Education Day 2012 01 16 \(KL\) Part 1.pdf](#) 898.12 kB

 [ER Education Day 2012 01 16 \(KL\) Part 2.pdf](#) 847.82 kB

 [ER Education Day 2012 01 16 \(KL\) Part 3.pdf](#) 688.33 kB